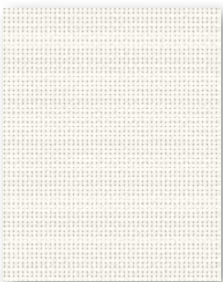
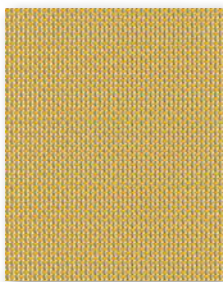


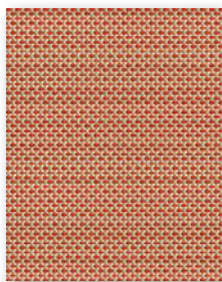
Batyline lounge



White



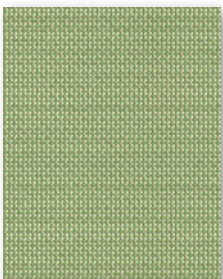
Safran



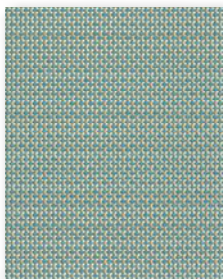
Cheyenne



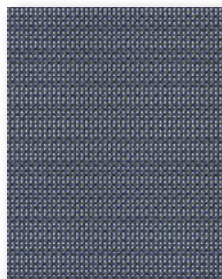
Zinc



Salvia



Espuma



Abismo



Karité

Fabrics Telas

Batyline lounge

Batyline lounge can only be used in the Lola G product. Likewise, the Lola G product can only be upholstered with the Batyline lounge fabric.

Batyline lounge solo puede ser utilizado en el producto Lola G. Así mismo, el producto Lola G solo puede tapizarse con el tejido Batyline lounge.

Composition: Batyline® (PET, PVC)

Composición: Batyline® (PET, PVC)

Durability (Martindale) > 120.000 cycles / Flame retardancy: B1/ M2

Durabilidad (Martindale) > 120.000 ciclos / Retardante fuego: B1/ M2

Extreme temperatures: -30 C / +70 C /

Temperaturas extremas: -30 C / +70 C /

UV Resistance · 4 (700h. Scale blue wool)

Certifications

Certificados

NFP 92-507

DIN 4102-1

IMO MSC 307(88) (2020 FTP CODE) ANNEX 1 PART 8

CAL TB 117

BS5852 SOURCE 2



ogofurniture.com